

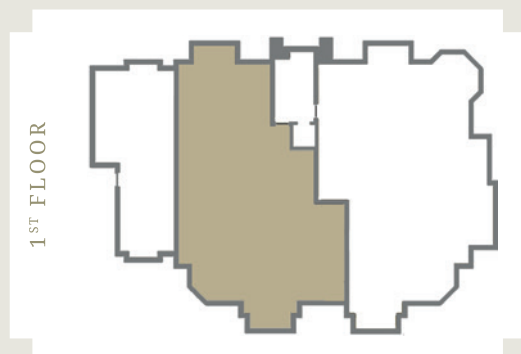
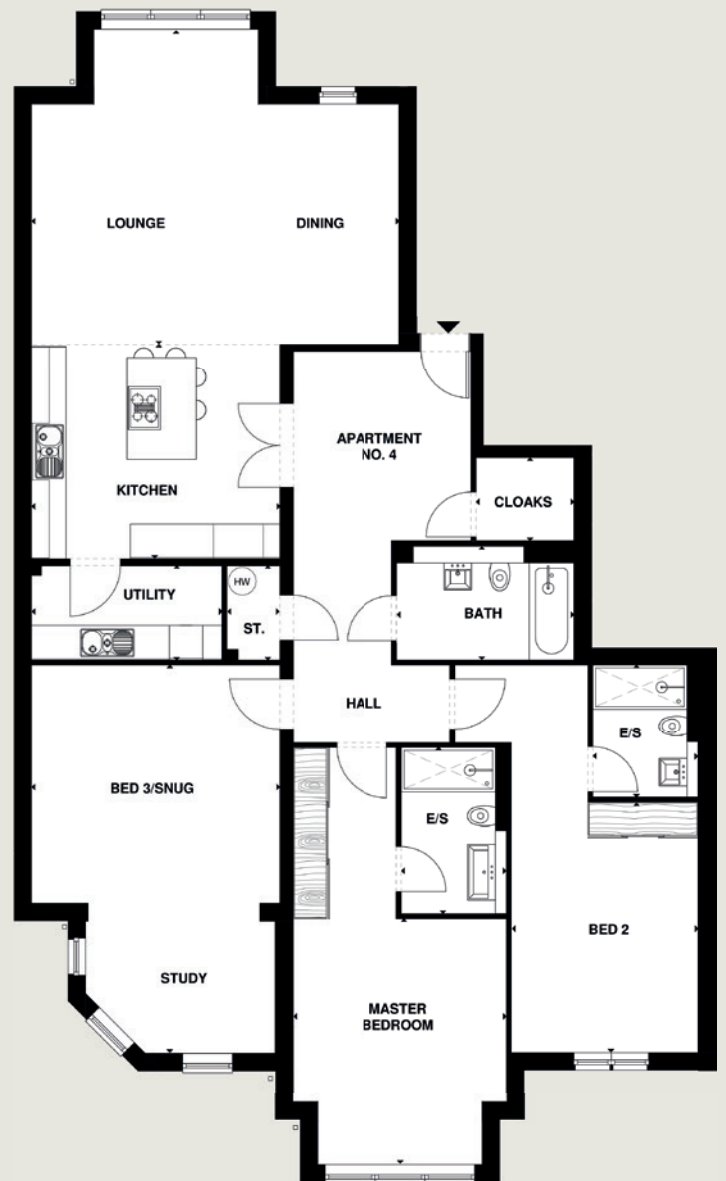
No
4

Eden House

3-bedroom Apartment

With its inviting, airy entrance hall and practical layout, alongside three large bedrooms and two ensuite bathrooms, this first-floor apartment provides an eclectic mix of extravagance and comfort.

Cloakroom	1.760 x 1.500m (5' 8" x 4' 9")
Storage	1.700 x 0.950m (5' 5" x 3' 1")
Kitchen	4.480 x 3.880m (14' 7" x 12' 7")
Utility Room	3.440 x 1.700m (11' 3" x 5' 6")
Living Room (Lounge / Dining)	6.650 x 5.700mm (21' 8" x 18' 7")
Bathroom	3.200 x 2.060m (10' 5" x 6' 7")
Master Bed (Excl. Ward)	4.440 x 3.870m (14' 5" x 12' 6")
En-Suite	3.000 x 1.900m (9' 8" x 6' 2")
Bedroom 2	4.500 x 3.360m (14' 7" x 11' 0")
En-Suite	2.400 x 1.900m (7' 9" x 6' 2")
Bedroom 3 / Snug (Incl. Study)	7.000 x 4.480m (22' 9" x 14' 7")



Floor Area NSA: 1871 sq ft (173.8 sq m.)